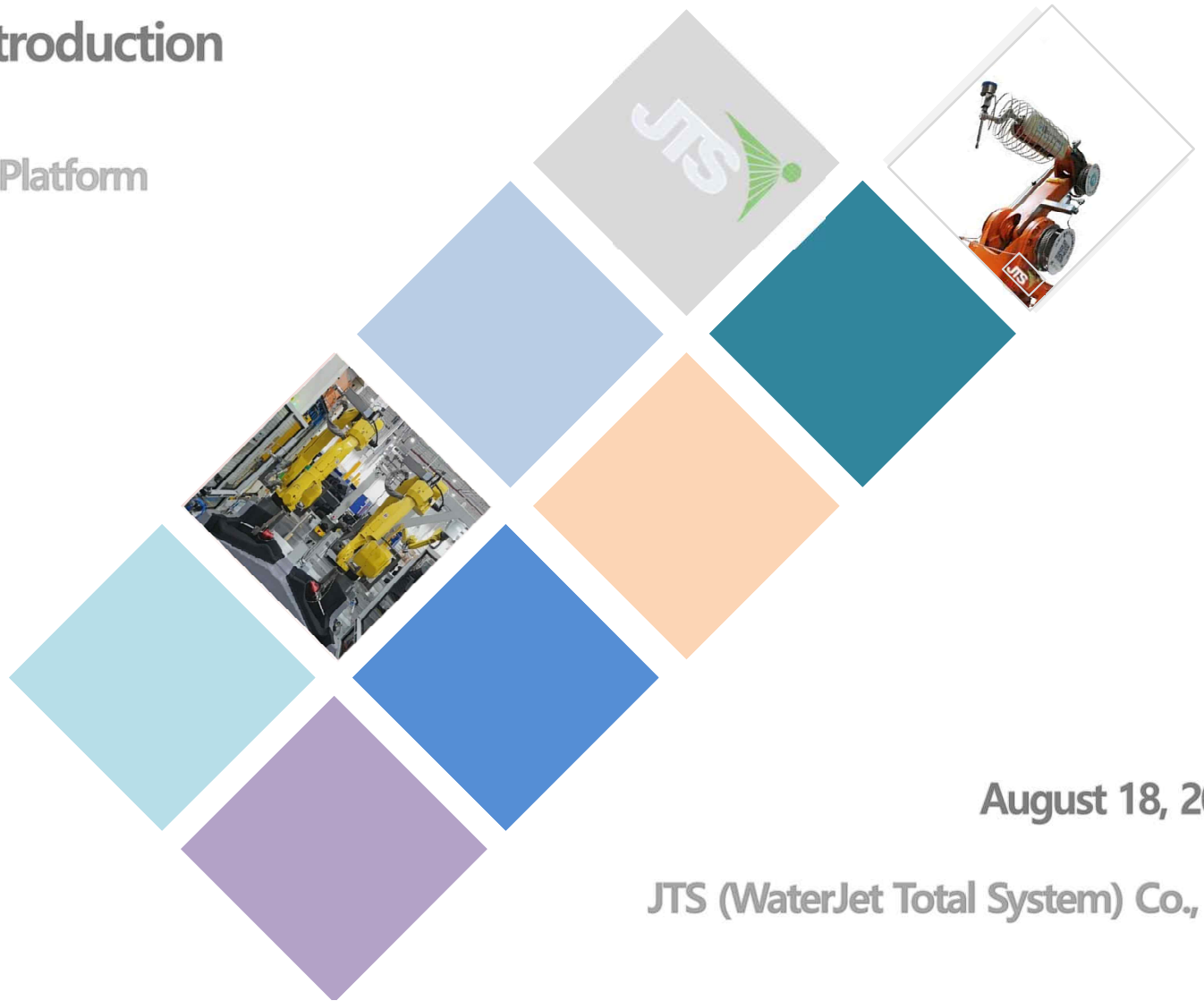




Water-Jet Total System

Company Introduction

A Global Leader in Waterjet Cutting Platform



August 18, 2020

JTS (WaterJet Total System) Co., Ltd

Company Philosophy

JTS is a professional manufacturer in the area of waterjet cutting technology, the quick-growing segment in cutting industry.

Driven by our technicians and innovative technology, we are trimming the materials with waterjet

Our Philosophy

- Our people works based on professional waterjet cutting experience
- Practical and reliable products and service for customers
- Customer oriented service
- Starting from customer's demand

Company: JTS Co., Ltd Korea South

CEO: K.N. Kim

Established: 2008YR



Brief History

1989

Produced A waterjet cutting machine & Supplied to Semiconductor industry as a first developer in Korea

1992

Produced A Robotic waterjet cutting machine

1993

Developed A High Pressure waterjet pump

2003

Developed A wet abrasive waterjet system

2008

Legal entity(JTS) established as well as JTS China

2009

Supplied A CNC waterjet cutting machine with 90K psi pump
Supplied waterjet cutting machine to Tesla USA for Model X

2015

Supplied A waterjet cutting machine to Volkswagen

2016

Supplied A waterjet cutting machine to FCA USA

2017

Supplied A waterjet cutting machine to Daimler Bentz China

Technologies & Solution

What We Offer



**Robot
Solution**

Others

Laser welding M/C
Magajine cleaning M/C
Open mask claeaning M/C

High Pressure Pump



Cutting System

**Waterjet system
Solution Provider**

Our Products

- Waterjet pump
- Waterjet cutting system
- Waterjet Deflashing (cleaning) system
- Waterjet Blasting system
- Waterjet Spare parts



Customers



High Pressure(HP) Pump

Designed for every application in between and engineered to be easy to operate.

Easy maintenance

Longer maintenance intervals and rapid component replacement.

Pressure-Compensated hydraulic pumps maintain smooth ultra-high pressure water at the cutting heads.

Easy to operation.

A panel-mounted display pressure gauges allow easy monitoring of inlet water filters and hydraulic performance.

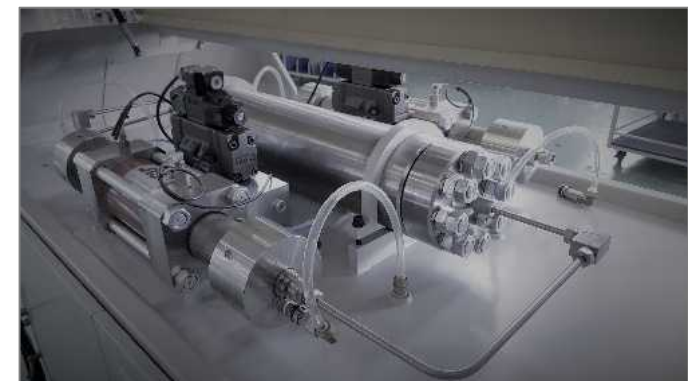
Excellent cutting performance

An inlet water filter system removes impurities to maximize cutting head performance. Boost pumps increase inlet water flow.

- Suitable for various kinds of cutting machines.
- Easy maintenance of intensifier
- Max. working pressure : 4,000kg/cm²
- 2 intensifiers (redundant) for continuous production to avoid downtime when maintenance required.
- Suitable to use in multiple robots for cutting.

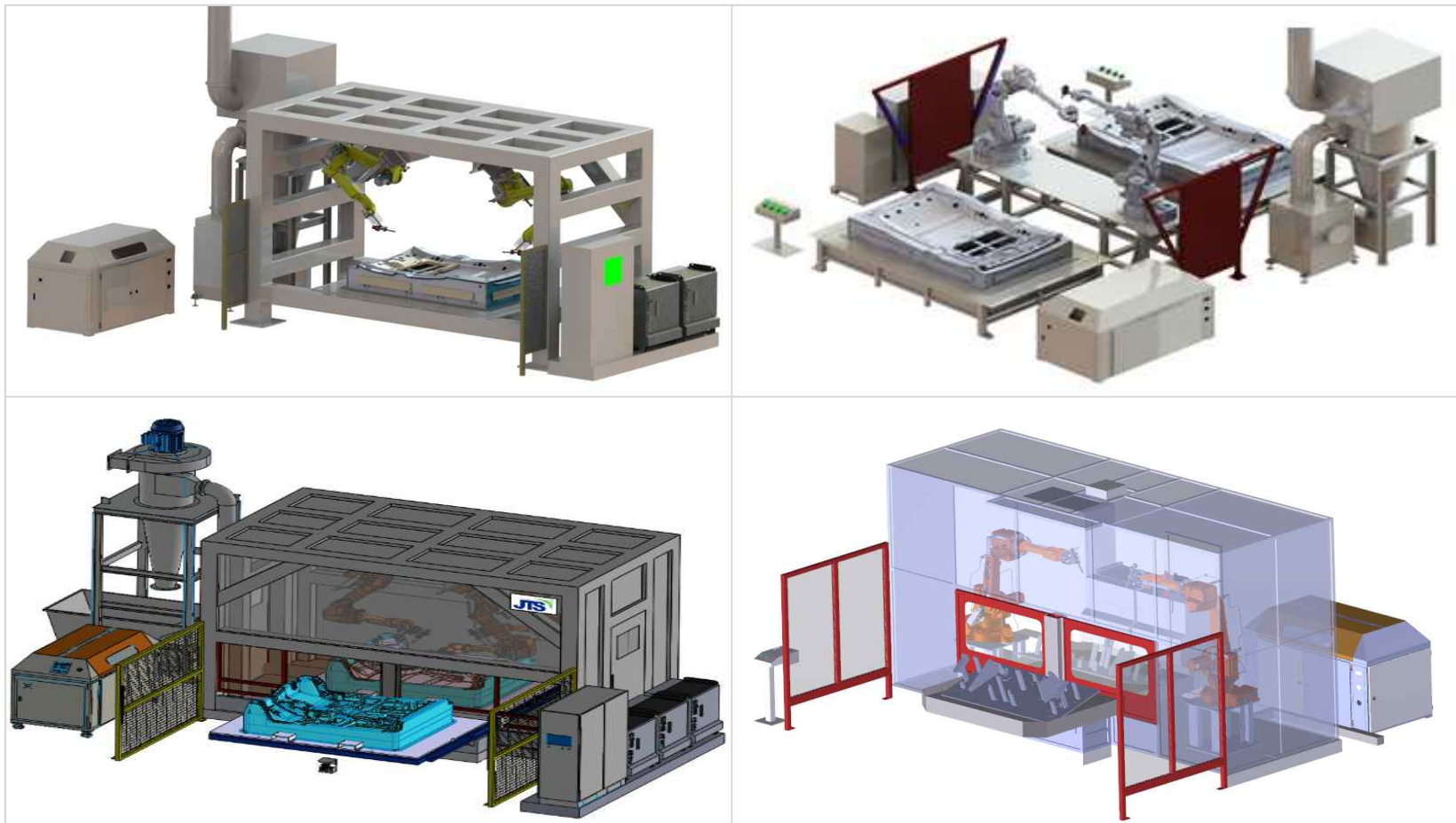


마력	길이	폭	높이	무게
50				



Cutting System

JTS provides various kinds of waterjet cutting solution in line with customer's need.



Cutting System



Gantry Fixed Table Type_Auto Part Loading

Cutting system that fits for wide range of applications

- Minimized number of mechanical devices combined with high pressure generation and articulated robot that will result in cost effective solution.
- Designed to easily adaptable for different cutting condition for cost efficiency.
- Integrated frame both robot and jig are installed provides smaller space for installation.
- Cyclone dust-collecting system for separate collecting of sludge and waste water after cutting.
- Adaptable to increase number of robots(maximum 4 robots can be installed on top roof frame) without changing.

Cutting System

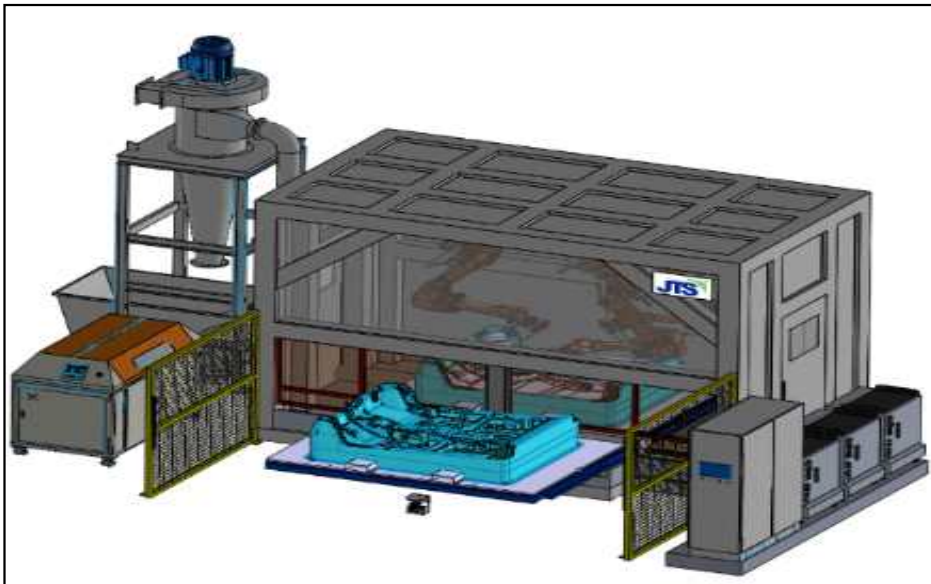


Fixed Table Type

The most effective for small quantity batch production

- Designed for bigger products to cut using high pressure and longer arm robot.
- Designed to focus on fixing waterjet jig and robot to cut bigger parts reliably
- Comprised of 2 pcs of common jig bases both sides to cut simultaneously
- Cyclone dust-collecting system for separate collecting of sludge and waste water after cutting.
- Monitoring system allows easy function change for manual and automatic operation for workers as well as detecting alarm.
- Safety circuit configuration provides safety for workers using the combination of laser scanner and light curtain installed.
- The advantage for small quantity batch production

Cutting System

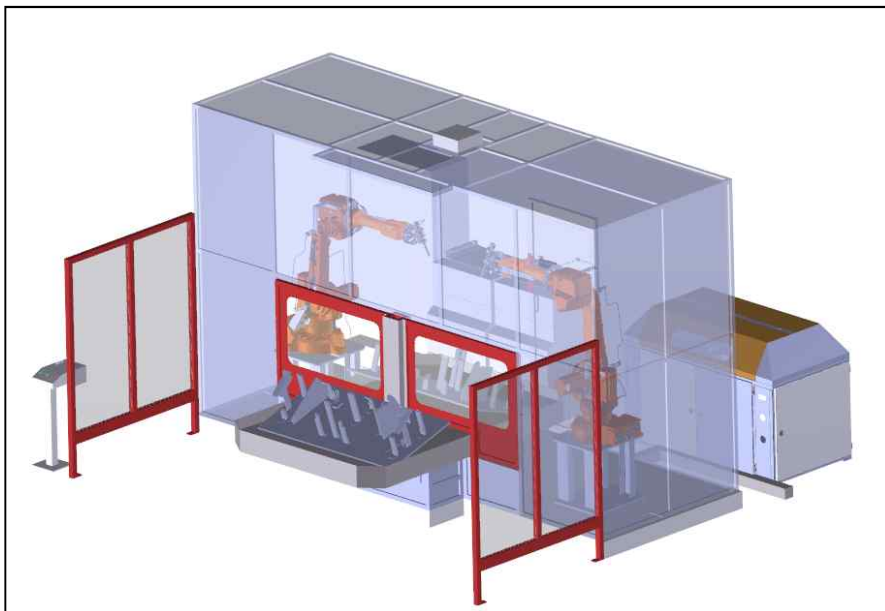


Turn Wall Design

Increase productivity by optimizing loading and unloading cycle time.

- Comprised of 2 cutting tables, loading and unloading is performed out of cutting box to minimize cycle time while cutting is continuing in the cutting box.
- Cyclone dust-collecting system for separate collecting of sludge and waste water after cutting.
- Optimized installation space designed to install robot to upper or vertical direction in the integrated frame.
- Adaptable to increase number of robots(maximum 4 robots) without changing structure as the robot position installed affects cycle time. (45 angle or vertical position available to install)
- Safety circuit configuration using laser scanner can detect any interruption for worker's safety.

Cutting System



Turntable Type

Increase productivity by optimizing loading and unloading cycle time to produce clash pad

- Optimized for flexible production as well as productivity through configuration of jig rotation table installed on turntable made with 4 stages.
- Reduced cycle time of table rotation TABLE using servo motor and speed reduction driven method
- Greatly reduced installation space using integration with jig rotation table and turn table.
- Monitoring system allows easy function change for manual and automatic operation for workers as well as detecting alarm.
- Designed for easy maintenance to control running, speed reduction, stop and clamping through servo and speed reduction device.
- Reliable jig design to hold down work piece.

Case study-Installation #1



D

Carper trim
1 jig
2 robots installed
Cyclon dust collection



S

Headliner trim
2 jigs
3 robots 90degree tilting
installed
Cyclon dust collection

Case Study-Installation #2



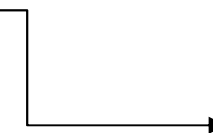
D



Carpet trim
1 jig
2 robots installed
Cyclon dust collection



H



Helmet trim
4 jigs
2 Robot installed

Case Study-Installation #3



V



I/P Trim
4 jigs tilting type
2 robots installed



F



Dashner trim
2 jigs
2 robots installed
Cyclon dust collection

Case Study-Installation #4



N



Headlining trim
2 jigs Turn table type
2 robots tilting type
Safety system



P



Dashiner trim
2 jigs turn table type
2 robots installed on upper side
High precision servo motor

Case Study-Installation #5



T



Headlining trim
2 jigs turn table type
2 robots installed on upper side
High precision servo motor



F



Instrument panel trim
2 jigs turn table type
2 robots installed
High precision servo motor

WATER JET CUTTING

JTS provides necessary spare parts for own machines as well as other brands.





Water-Jet Total System

Thank you